

Immigration Hub Post-Election Survey Results Pennsylvania



Pennsylvania Path to Victory:

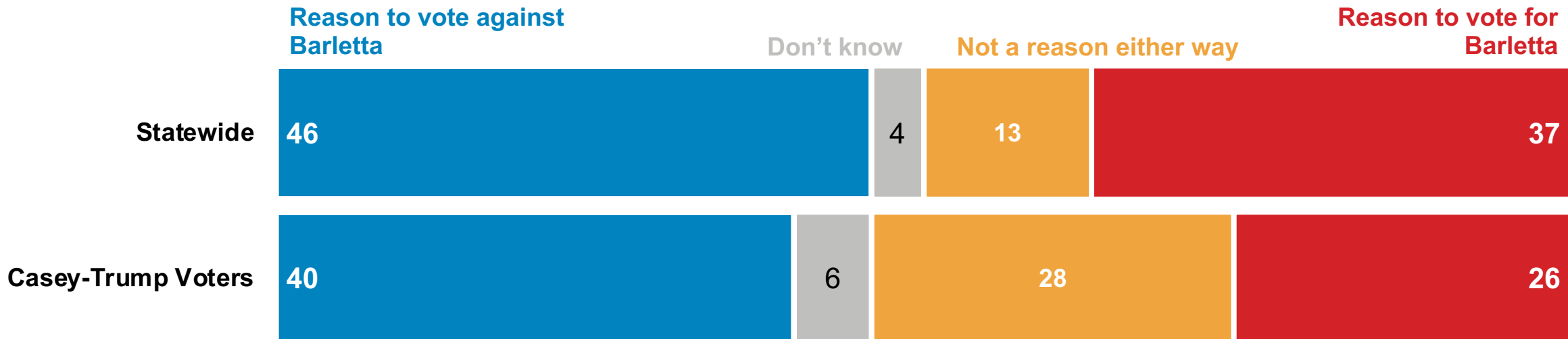
Casey's impressive showing included winning back Obama-Trump counties and exceeding past performances in the Pittsburgh market

Democratic Share of the Vote

County	% Casey '18	Casey vs. Clinton	% Clinton '16	% Obama '12	% Casey '12
Statewide	56%	+8.0	48%	52%	53%
Obama-Trump Counties	46%	+10.4	35%	48%	50%
Pittsburgh DMA	55%	+10.8	44%	48%	51%
Allegheny County	66%	+9.5	57%	57%	59%
Rest of Pitt DMA	44%	+11.8	33%	39%	43%

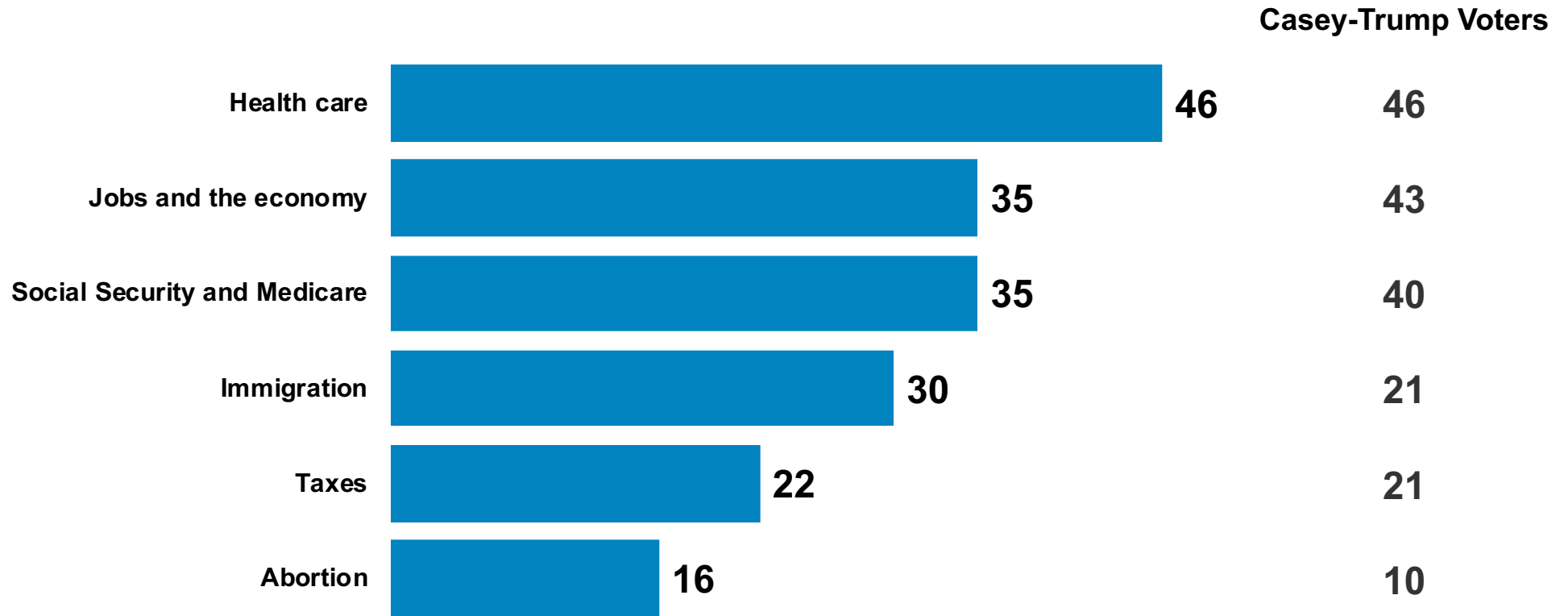
Barletta's Trumpian immigration positions were a net negative, overall and among Casey-Trump voters

Lou Barletta is known for his positions on immigration, which are similar to Donald Trump's.... Was Barletta being similar to Trump on immigration more of a reason to vote for Barletta or more of a reason to vote against Barletta?



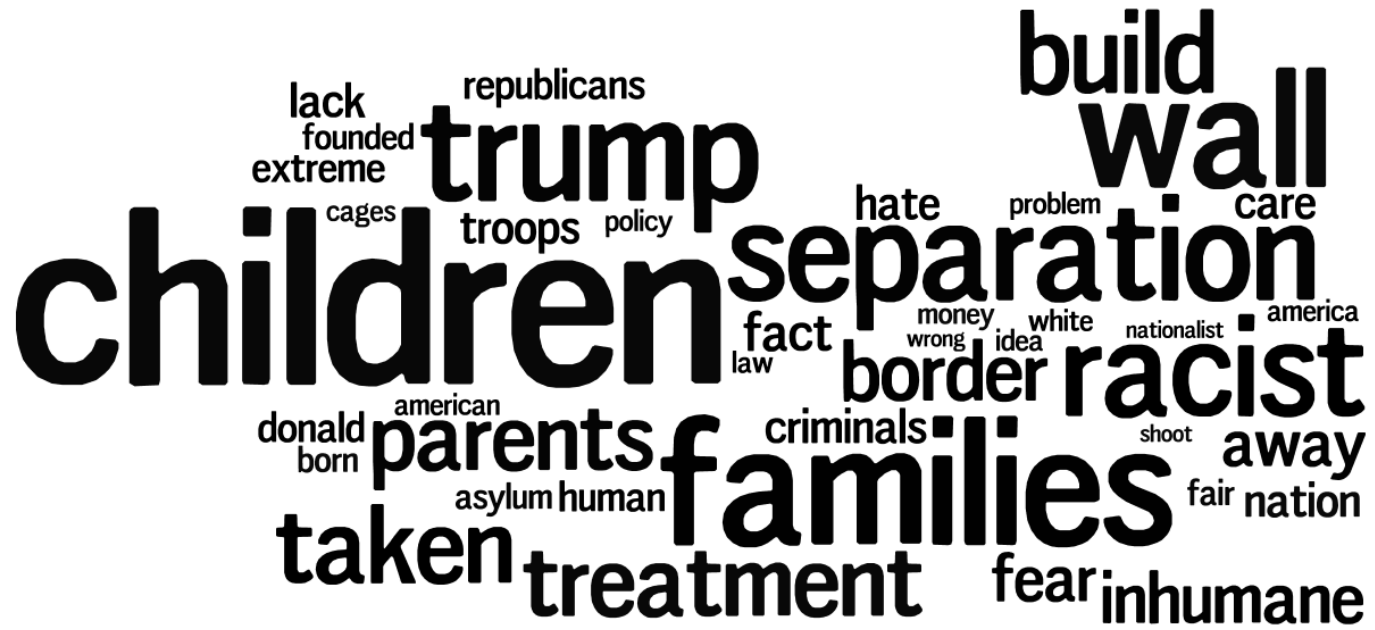
Voters ranked pocketbook issues at top, far above immigration

Which issue on this list was most important in your vote for U.S. Senate?



Voters cited the family separation policies and border wall as top concerns about the Republican immigration policies

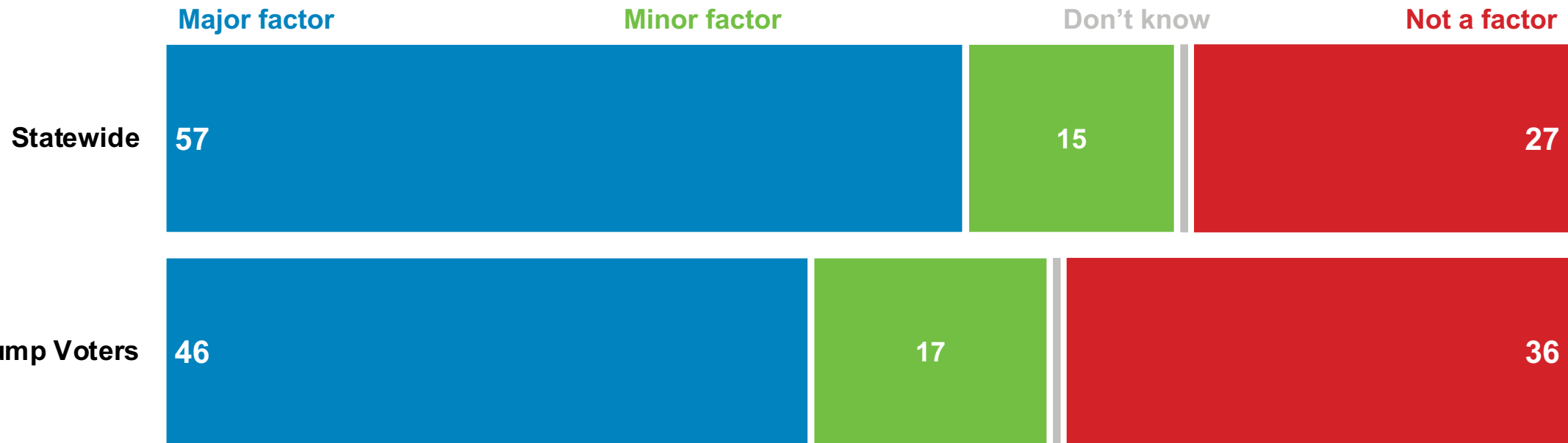
What concerns you most about the immigration positions of Donald Trump and Lou Barletta?



- “The lies that they are telling about the caravan, and the separation of children from their parents.”
- “As a nation of immigrants I don't like the way new immigrant are treated.”
- “The direction they are going is inhumane. I believe in strong borders but I don't believe in active duty military patrolling our borders.”

Trump was a major presence on the minds of Pennsylvania voters

How big of a factor were your feelings about Donald Trump in your vote for U.S. Senate?



Voters found Barletta's anti-immigrant platform more concerning than the GOP rhetoric of aligning Casey with sanctuary cities & open borders

Which of the following concerns your more?

That Lou Barletta supports the same anti-immigrant platform as Trump, which has separated children from their parents and is fueling divisions and even violence across the country

Don't know/
Refused

Neither

That Bob Casey supports dangerous immigration policies like sanctuary cities and open borders, which take away American jobs and make us less safe

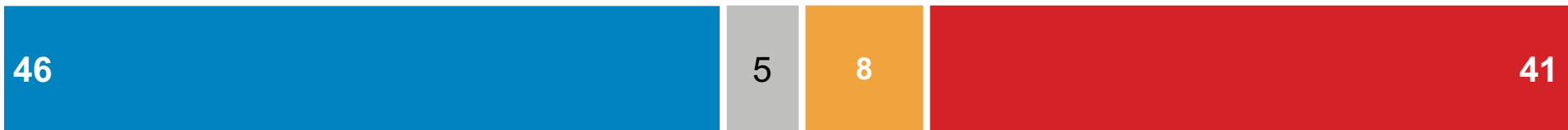
Statewide



Casey-Trump Voters



Outer Pitt. DMA



Barletta's record on health care was more concerning to voters than Casey's position on immigration

Which of the following concerns your more?

That Lou Barletta voted for a health care repeal plan that would allow health insurance companies to discriminate against people with pre-existing conditions

Don't know
Refused

Neither

That Bob Casey supports dangerous immigration policies like sanctuary cities and open borders, which take away American jobs and make us less safe

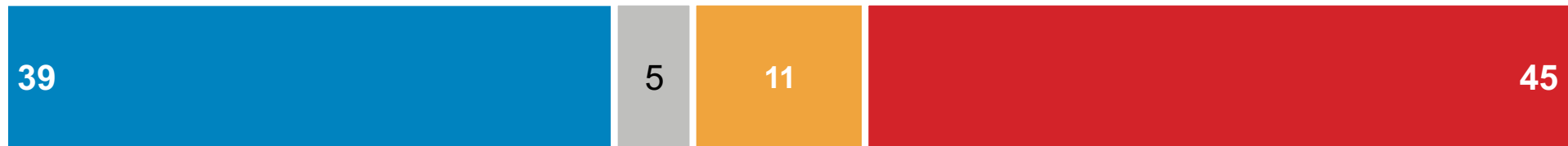
Statewide



Casey-Trump Voters

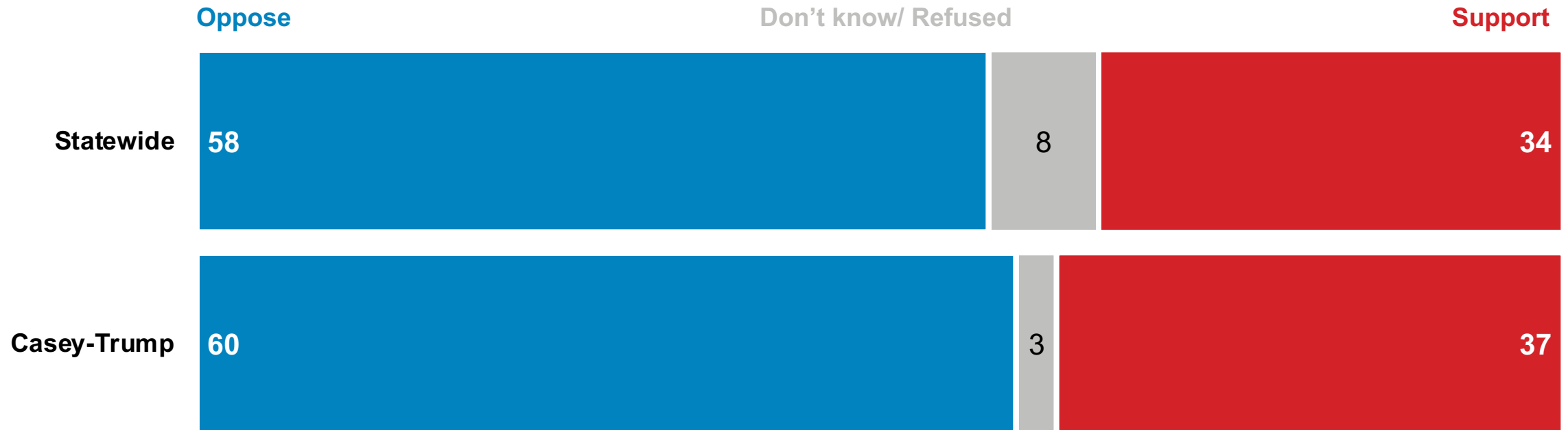


Outer Pitt. DMA

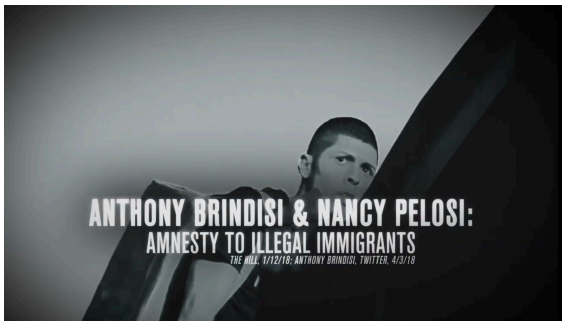


Voters were in clear opposition to the zero-tolerance policy at the border

Do you support or oppose the “zero tolerance” policy at the border, which separated families when they were caught crossing the border and detained children separately from their parents?



This played out across the country as the GOP's divisive ads backfired in purple races, including key House and Gubernatorial contests



What we did

Pennsylvania

The Pennsylvania survey was fielded between November 6th and November 8th, 2018, among a base sample of 804 voters statewide. An additional oversample was conducted in the outer Pittsburgh DMA (counties in the market aside from Allegheny County) to reach 206 total voters in this region. The margin of error at the 95% confidence level is +/- 3.5% for the statewide base sample, and the margin of error on sub-samples is greater.

Thank You

New York

215 Park Ave South
15th Floor
New York, NY 10003

Washington, DC

1001 G Street NW
6th Floor East
Washington, DC 20001

Hartford

185 Asylum St
16th Floor
Hartford, CT 06103

Chicago

222 W. Ontario St.
Suite 600
Chicago, IL 60654

Denver

1120 Lincoln Street
Suite 905
Denver, CO 80203

Seattle

2608 2nd Ave
#293
Seattle, WA 98121